



Major Keys

Sharp Keys: The last sharp is **Ti** (♯). **Do** (♮) is a half-step (minor 2nd) above that.

Flat Keys: The second flat from the right is **Do** (♮). The key with one flat is F Major.

Minor Keys

The name of the minor key is a minor 3rd (three half-steps) below the name of the major key.

Major/Minor Relationships

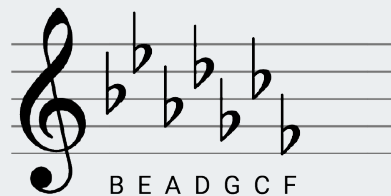
Relative keys share the same key signature. The relative minor is a minor 3rd lower than its relative major.

Parallel keys share the same tonic. The parallel minor has three more flats, or three fewer sharps, than its parallel major.

Order of Sharps



Order of Flats



Flat Keys

C Major	A Minor	F Major	D Minor	B [♭] Major	G Minor	E [♭] Major	C Minor
A [♭] Major	F Minor	D [♭] Major	B [♭] Minor	G [♭] Major	E [♭] Minor	C [♭] Major	A [♭] Minor

Sharp Keys

C Major	A Minor	G Major	E Minor	D Major	B Minor	A Major	F [♯] Minor
E Major	C [♯] Minor	B Major	G [♯] Minor	F [♯] Major	D [♯] Minor	C [♯] Major	A [♯] Minor