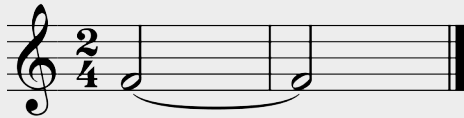


Ties

in 2/4, 3/4 and 4/4

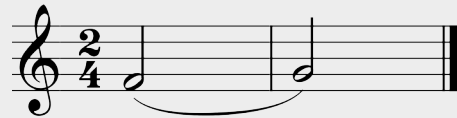


A **tie** is a curved line joining two notes of the same pitch:



Tied notes are counted as one note, for the duration of their combined rhythmic value.

A **slur** is a curved line covering two or more notes of different pitches:



Slurred notes are played without separation, using legato articulation.

A

B

C

D

E

F

G

H

1 2 1 + 2 + 1 + 2 + 1 + 2 + 1 2 + 1 + 2 + 1 2 1 2

I

J

Re-write the rhythms using barlines and tied notes.

1 **2**

3 **4**