

# Triad Inversions

## Root Position, 1st Inversion, 2nd Inversion



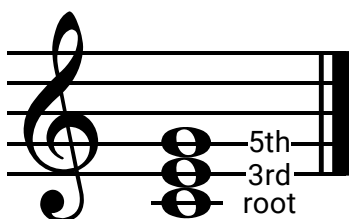
**Root:**  
the note the chord  
is named for

**Bass:**  
lowest sounding  
note of the chord

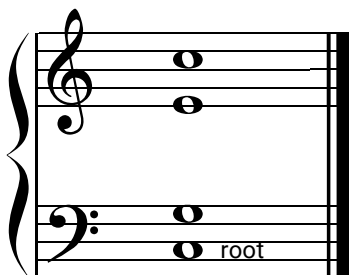
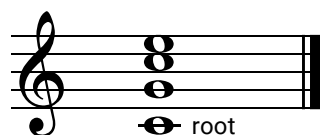
The inversion is  
always determined  
by whether the **root**,  
**3rd** or **5th** is in the  
bass.

### Root Position

#### C Major

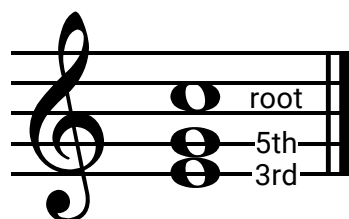


root in the bass

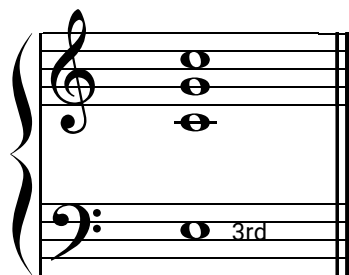
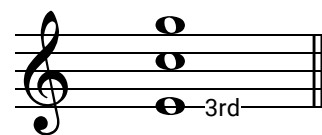


### 1st Inversion

#### C Major

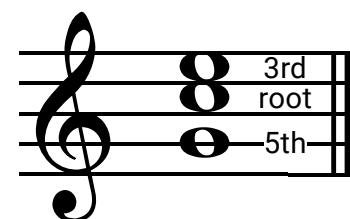


3rd in the bass



### 2nd Inversion

#### C Major



5th in the bass

